



FOTEK

**ULTRA SHORT M18
PHOTO SENSOR**

超短型M18光電開關

ServoTech

伺服科技

伺服科技有限公司

<http://www.servo.com.cn>

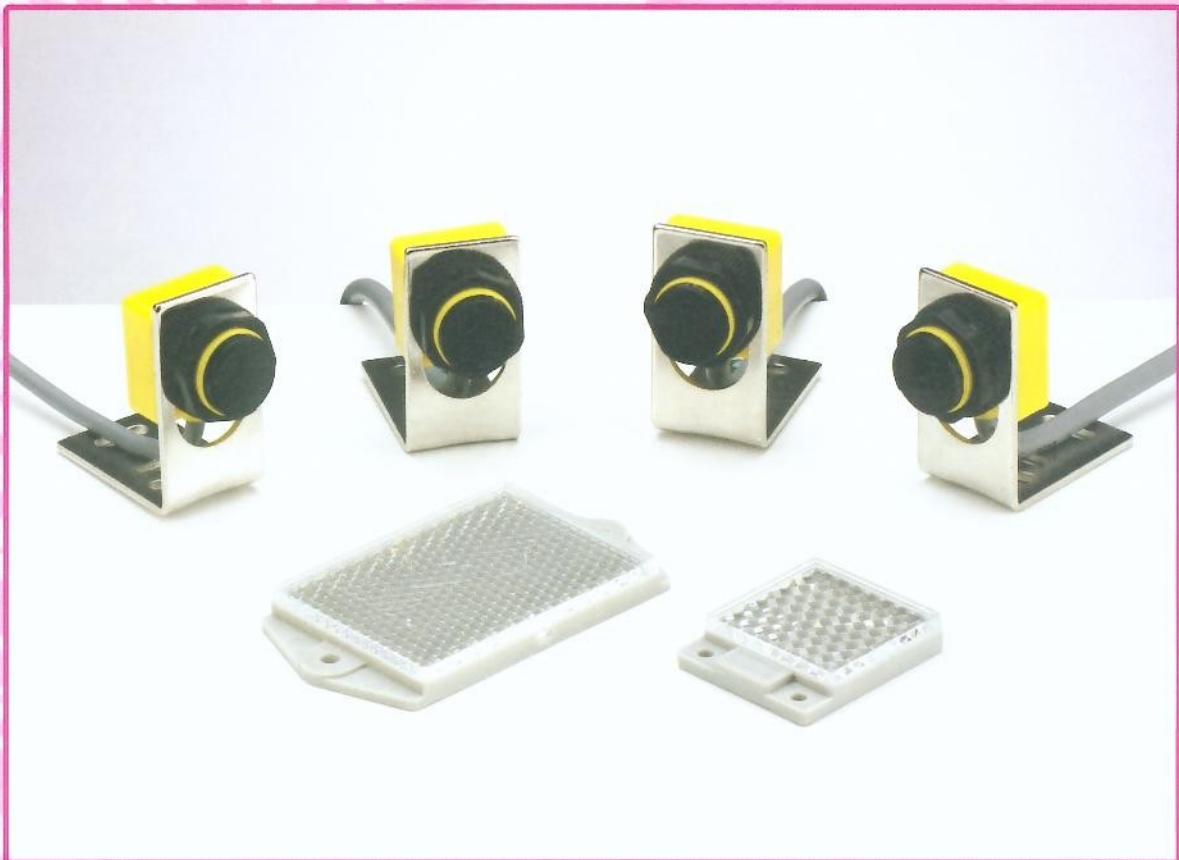
香港葵涌梨木道79號亞洲貿易中心1822室
Tel: (852)24841882 Fax: (852)2422710

THRU BEAM:30M

MIRROR REFLEX:3M

DIFFUSE REFLEX:15CM

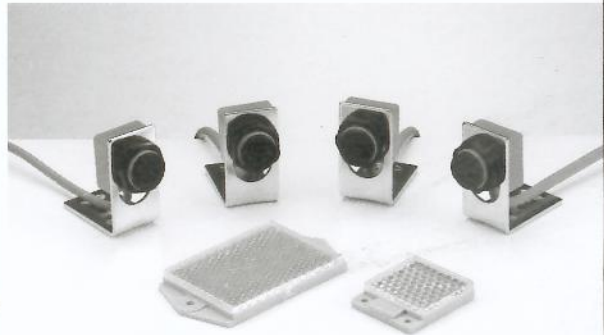
CE



陽明電機股份有限公司

- ★UTRA SHORT BODY LENGTH : 30 MM ONLY
- ★UTRA LONG SETTING DISTANCE : THRU BEAM 30.0M
- ★TWICE OUTPUT : NPN & PNP TWO OUTPUT
- ★HIGH SOLID COMPACT CONSTRUCTION : IP 67

- ★超短身長 : 30 MM
- ★超長檢測距離 : 透過型 30 M
- ★雙輸出 : NPN & PNP
- ★高強度結構 : IP 67



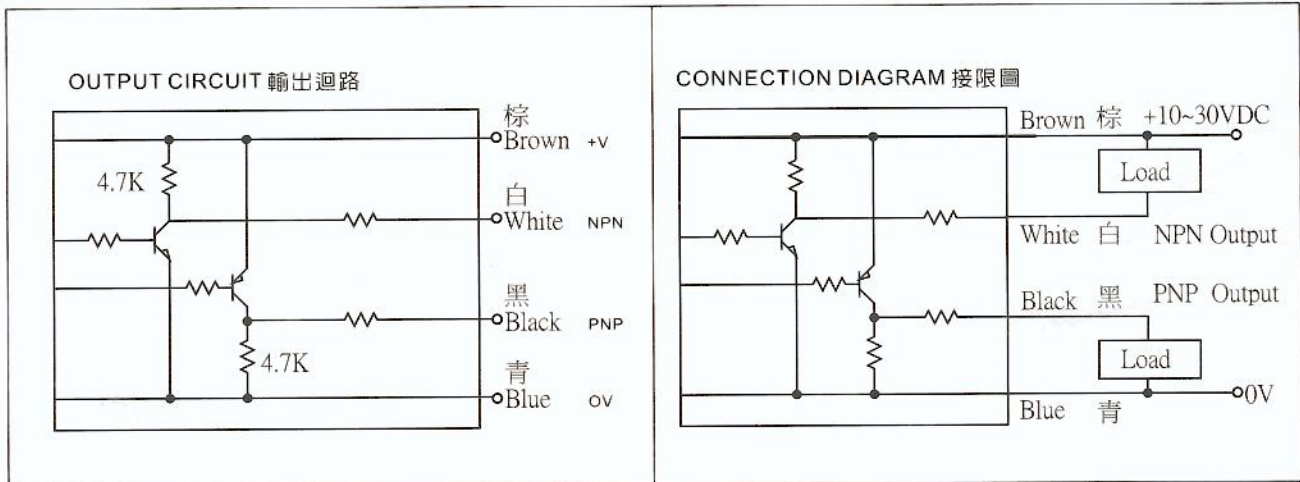
APPLICATION <應用例

CAR WASHING MACHINE or CONVEYER
洗車機 或 輸送設備

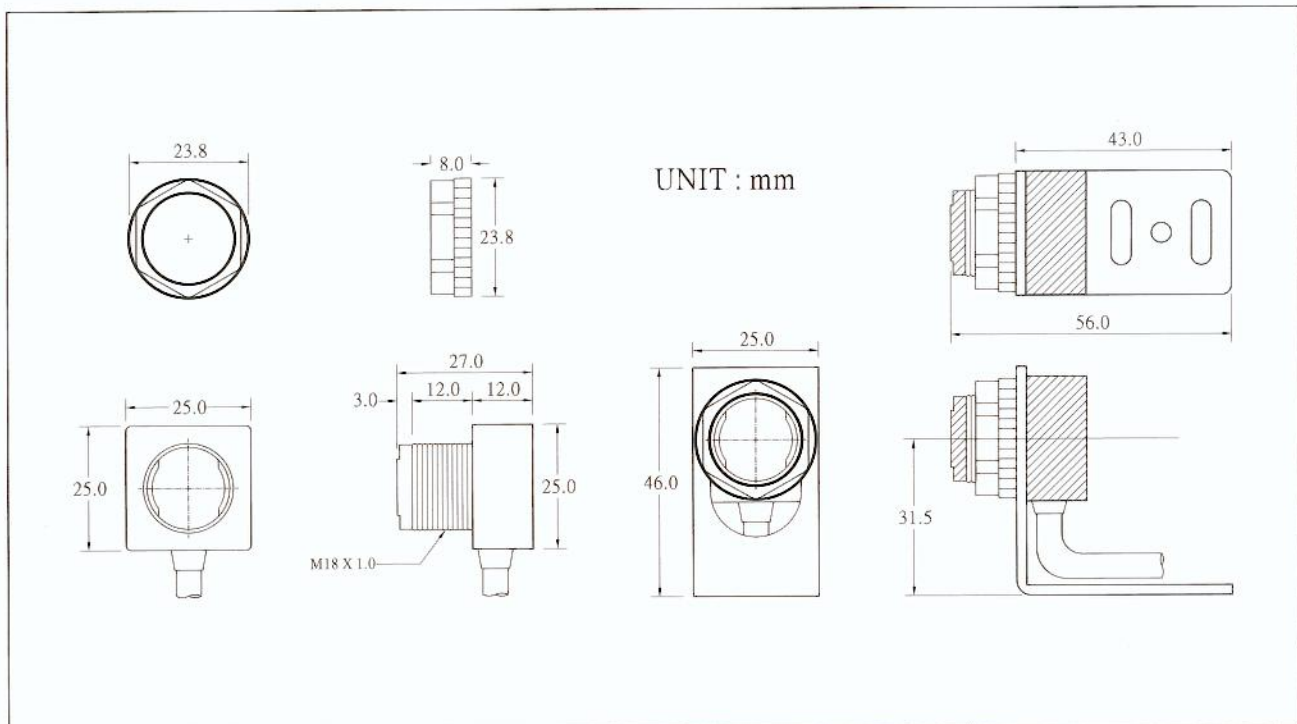
■ SPECIFICATION/規格

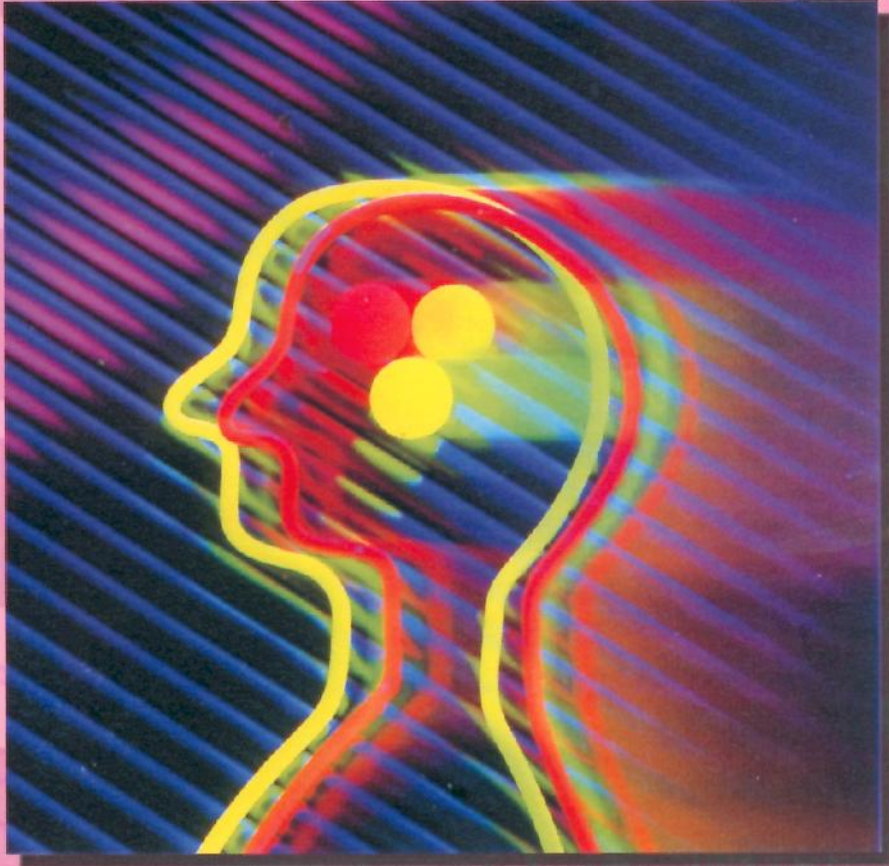
| TYPE 型式 | DIFFUSE REFLEX 擴散反射型 | | MIRROR REFLEX 鏡片反射型 | | THRU BEAM 透過型 | |
|-------------------------|---|----------|------------------------|----------|-------------------------|-----------|
| | R18-10X | R18-10XB | M18-3MX | M18-3MXB | T18-30MX | T18-30MXB |
| MODEL 型號 | R18-10X | R18-10XB | M18-3MX | M18-3MXB | T18-30MX | T18-30MXB |
| OUTPUT STATUS 輸出狀態 | NO | NC | NO | NC | NO | NC |
| SENSING DISTANCE 檢測距離 | 15 CM | | 3M | | 30 M | |
| OPERATING VOLTAGE 工作電壓 | 10 ~ 30 VDC ; RIPPLE < 20% OF P-P | | | | | |
| OPERATING CURRENT 耗電流 | 20 mA | | 20 mA | | Tx < 20 mA ; Rx < 15 mA | |
| OUTPUT METHOD 輸出方式 | NPN & PNP TWO OUTPUT | | | | | |
| OUTPUT CURRENT 輸出電流 | 150 mA MAX. | | | | | |
| RESIDUAL VOLTAGE 殘留電壓 | 0.8V MAX. | | | | | |
| LEAKAGE CURRENT 洩漏電流 | 0.8 mA MAX. | | | | | |
| PROTECTION CIRCUIT 保護電路 | SHORT CIRCUIT & POLARITY REVERSED PROTECTION | | | | | |
| RESPONSE TIME 反應時間 | 1 ms | | | | 5 ms | |
| SENS. ADJUSTER 感度調整 | 270 TRIMMER | | NON | | | |
| HYSTERESIS 應差 | 20 % OF SENSING DISTANCE MAX. | | | | | |
| ILLUMINATION 耐外亂光 | LAMPLIGH < 10,000 LUX ; SUNLIGHT < 20,000 LUX | | | | | |
| LEAD WIRE 出線方式 | 4 ϕ 5.0 ϕ x 2 M | | | | | |
| HOUSING MATERIAL 外殼材質 | INTENSIVE ABS | | | | | |
| OP. CIRCUMSTANCE 工作環境 | - 20°C ~ +60°C ; 35% ~ 85% RH | | | | | |
| PROTECTION CLASS 保護等級 | IP-67 | | | | | |

OUTPUT CIRCUIT & CONNECTION DIAGRAM 輸出迴路 & 接線圖



DIMENSION & FIXED METHOD 外型尺寸 & 按裝方式





**TO MANUFACTURE THE WORLD STANDARD CONTROLS
BY MASS PRODUCING & STANDARDIZING
TO OFFER THE EXCELLENT QUALITY ASSURANCE
BY ADVANCED TECHNOLOGY &
STRICT TOTAL QUALITY CONTROL**

量產化、標準化；製造世界標準的電控器材
先進技術、嚴格品管；提供最佳品質保證