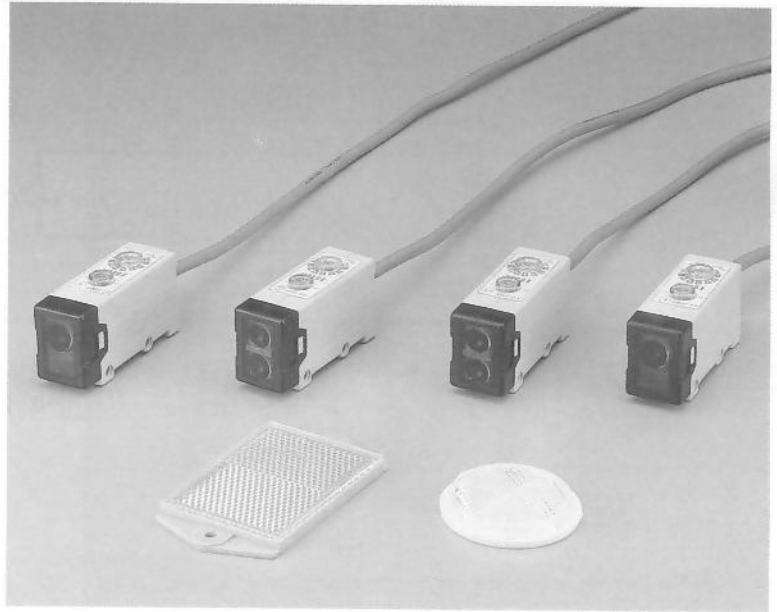


F Series

STANDARD TYPE PHOTO SENSOR

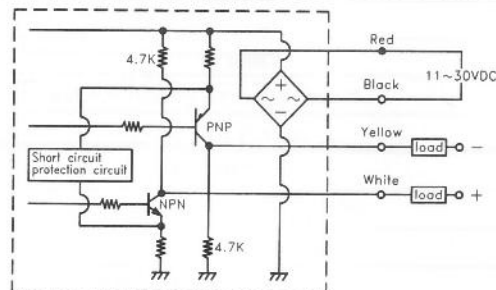
- Operating Voltage : 11~30VDC
- NPN & PNP Two Output ,
NO / NC Changeable .
- Polarity Reversed Protection Circuit .
- Vertical & Horizontal Sensing
Direction Are Available .
Protected By Short Circuit &
- Long Sensing Distance
Reflex Type : 2M
Mirror Reflex Type : 4M
Thru Beam Type : 20M



General Specification

Specification	Data
Operating Voltage	10~30 VDC ; Ripple < 20% of Peak to Peak
Output Method	NPN & PNP Two Output
Output Status	NO < Normal Open > , NC Type Available Also
Output Current	150mA max.
Protection Circuit	Short Circuit & Polarity Reversed Protection
Residual Voltage	0.8V max.
Leakage Current	0.8mA max.
Sensitivity Adjuster	270° Trimmer
Response Time	2ms Max.
Hysteresis	10% of Sensing Distance Max.
Emitter	Infrared LED
Illumination	Sunlight < 50,000 Lux. ; Lamplight < 10,000 Lux.
Connection Method	4 Cores / 5.0 φ X 2m
Housing Material	Intensive PBT
Operating Temp./Hum.	-20°C ~ +60°C ; 35% ~ 85% RH
Protection Class	IP-65

Output Circuit
&
Connection Diagram



Specification

Reflex Type	FR-1MX	FR-1MX-V	FR-2MX	FR-2MX-V
Sensing Direction	Horizontal	Vertical	Horizontal	Vertical
Sensing Distance	1m		2m	
Current Consumption	20mA max.		35mA max.	
Weight	Appr. 105g	Appr. 120g	Appr. 105g	Appr. 125g
Mirror Reflex Type	FG-3MX		FG-3MX-V	
Sensing Direction	Horizontal		Vertical	
Sensing Distance	4m			
Current Consumption	20mA max.			
Weight	Appr. 105g		Appr. 120g	
Thru Beam Type	FT-10MX	FT-10MX-V	FT-20MX	FT-20MX-V
Sensing Direction	Horizontal	Vertical	Horizontal	Vertical
Sensing Distance	10m		20m	
Current Consumption	Emitter < 30mA ; Receiver < 20mA			
Weight	Appr. 210g	Appr. 240g	Appr. 210g	Appr. 240g

Dimension

