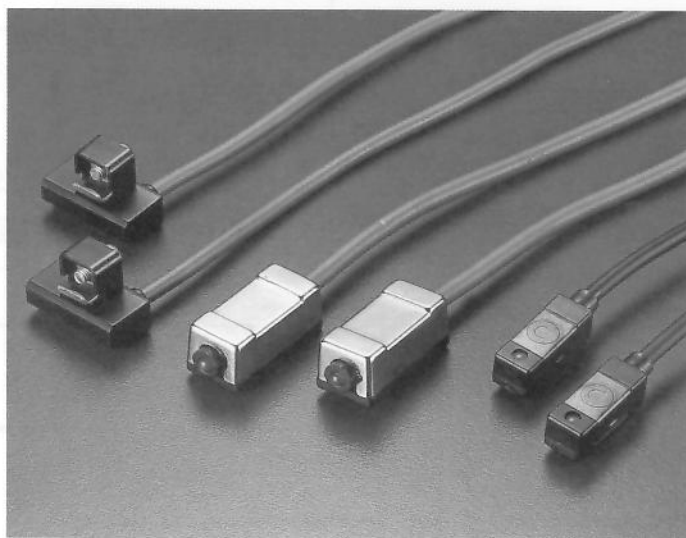


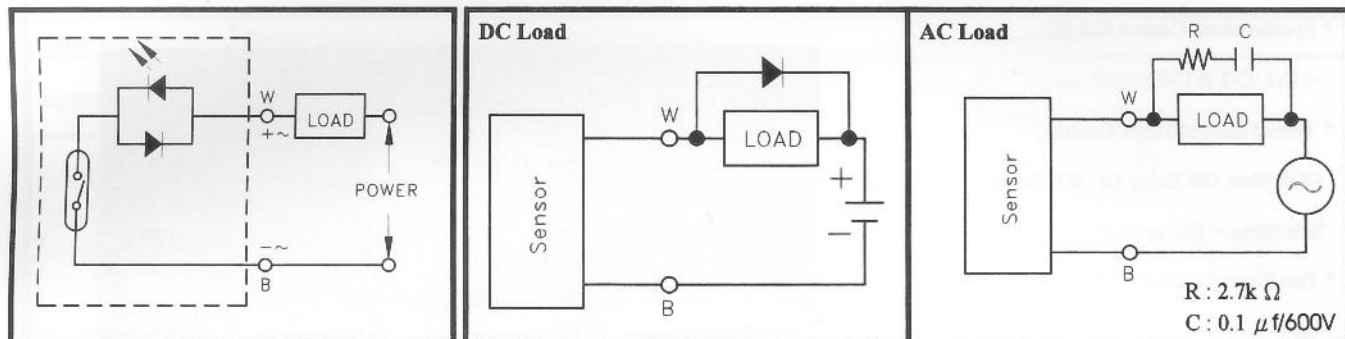
- * Free Voltage : AC / DC Suitable
- * Wide Voltage Range : 5~240V
- * High Capacity of Contact : 8W
- * High Speed Response Time : 1ms
- * Long Life Over 10^7 Times



Specification

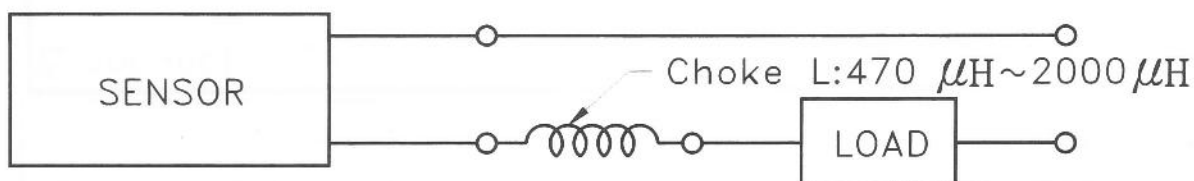
Type	Standard Type	Mini Type	T Type
Model	FC - 1	FC - 2	FC - 3
Operating Voltage	5~240 VAC / DC		
Rated Current	50mA		
Rated Wattage	DC : 8W , AC : 10VA		
Output Status	NO		
Response Time	1ms		
Voltage Drop	2V max.		
Connection Method	2M / 2 Cores		
Operating Temp.	-10 C ~ +60 C		
Protection Class	IP-66	IP-64	IP-66
Weight	42g	33g	35g
Model of NC	FC-1B , FC-2B & FC-3B , Specification same As NO Type , But Operating Voltage is 5~24 VDC , 20mA / 2W Only .		
Dimension			

Circuit & Connection Diagram / Protection Circuit



Notice

If The Lead Wire of Reed Sensor is Extended Over 10m , Please Serie The Choke To Reed Sensor , As Closure As Possible .



Fixed Parts

Band

PN - 16 - S

Material of Cylinder
 S : Stainless Steel
 A : Aluminum Alloy

Diameter of Cylinder

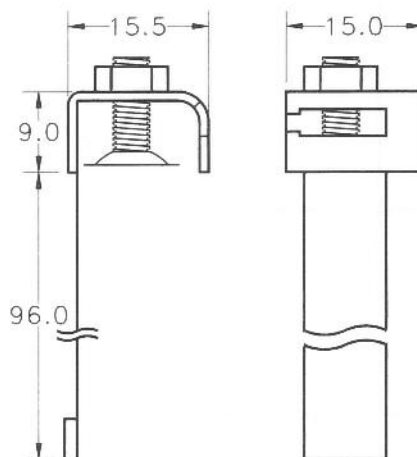
16 : 16.0 φ

20 : 20.0 φ

:

:

150 : 150.0 φ



Bracket

Unit : mm

Model	A	B	C	D
PM-6	20.5	31.0	6.0	12.0
PM-8	20.5	34.0	8.0	12.0
PM-10	21.0	36.0	10.0	12.0

